



**DOMESTIC &
COMMERCIAL RANGE**
410mm

UNIVENT - Technical Specifications and Performance

UNIVENT	410mm
Throat Size	410mm
Number of Blades	28
Steel Bearings	2
Shaft	10mm (aluminium)
Outer Arm	0.9mm (aluminium)
Axial Fan Blade (Optional)	Available
Variable Pitch Base (Up to 45 degrees)	Yes
Area covered by one unit (based on minimum air change)	181m ²
Exhaust capacity	340 litres per second
Cyclone Tested	Yes
Approximate weight (rotor head only)	2.0kg
Box Dimension	50cm x 50cm x 50cm

Powder coating to colorbond colors optional and available on request. (additional charges apply) Standard Mill finish

Product Features:

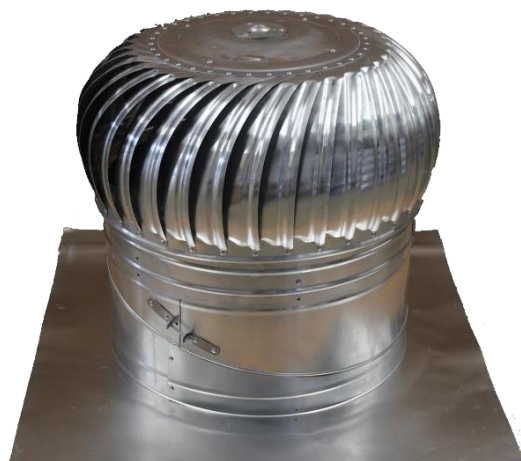
- All Aluminium, anti-corrosive construction (Australian grade 5005 H34)
- 2 x individually sealed and lubricated solid steel ball bearings
- Unique fully replaceable spindle
- 10 years product manufacturers warranty

Built for Durability and Performance:

- “Akulon” fibreglass reinforced bearing housing
- 3 riveted 10mm aluminium internal braces
- 6 robust inner arms for internal bracing
- Attachable axial fan for increases air flow (optional)
- Tested to withstand speeds up to 190km/hr
- Tropical Cyclone category 2 rated

Easy Installation:

- Variable throat to adjust to roof pitches up to 45 degrees
- Large malleable flashing for easier profiling to different roofs





POWDER COATING
Residential & Commercial

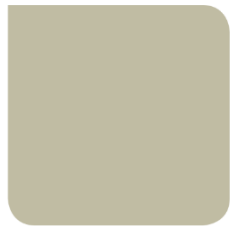
Powder coating is available for all sized roof ventilators.
Our smallest sizes, the 300mm and 360mm sized vents are all kept in Colorbond colours.
However our larger sizes, the 410mm, 530mm and 610mm are only powder-coated on request.
Below are the Colorbond colours our vents are available in.

We also stock and will still powder coat superseded colours such as: **Bushland, Headland, Plantation, Sandbank, Wilderness and Loft.**

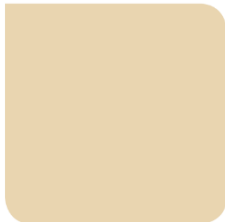
Colorbond®



Surfmist®



Evening Haze®



Classic Cream™



Paperbark®



Shale Grey™



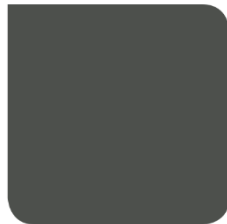
Dune®



Cove™



Pale Eucalypt®



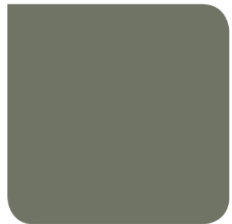
Woodland Grey®



Windspray®



Gully™



Mangrove™



Deep Ocean®



Cottage Green®



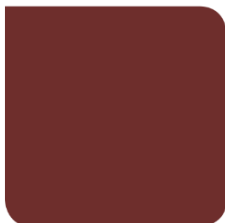
Wallaby™



Jasper®



Basalt™



Manor Red®



Night Sky®



Ironstone®



Terrain®



Monument®